

Hand Held Bidet - Installation Instructions

Parts Included

- Bidet Sprayer Head
- T-Valve + Male/Female Adapter
- Plumbers Tape
- Metal Bidet Hose
- Sprayer Holster & Screws



Scan QR code to watch video

Before Installation

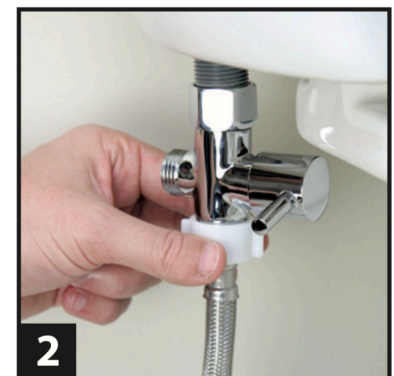
Check the water supply line. If the line that connects the toilet tank to the water shutoff valve is a rigid pipe, you will need to purchase a flexible hose to replace it before installing. The length of the hose and the size of the connectors vary

Installation

1. Turn off the water supply valve for the toilet (at the wall) and flush the toilet to completely empty the tank (Image 1)



2. Disconnect flexible water supply line directly under the toilet tank. Apply plumbers tape around the thread and then connect the T-valve to the toilet tank. Reconnect the flexible water supply line to the bottom of the T-valve. It is important not to 'over tighten' the connections (Image 2)



3. Attach one end of the metal bidet hose to the open end of the T-valve and the other end to the bidet sprays head

4. Mount Sprayer Holster. Using the sprayer holster, find the appropriate location on the wall near the toilet and use screws (included) to attach to wall

5. Turn water supply valve back on at the wall and check for leaks (apply more plumbers tape if required)

MANUFACTURERS RECOMMENDATION

After each use, it is recommended to turn off the T-valve to close the water supply to the bidet sprayer head. Failure to do so may weaken the bidet spray head or cause flooding. The manufacturer is not responsible for damage which may be caused by failure to follow the above recommendation.